

# MASTER OF SCIENCE IN HUMAN SERVICES



## MAKE AN IMPACT ON YOUR CAREER AND COMMUNITY

Expand your knowledge within the human services field to become an advocate for families and communities. The curriculum prepares human services professionals for leadership positions in a variety of nonprofit or government agencies that drive positive change in families and communities.<sup>1</sup> The program adheres to the curriculum standards of the Council for Standards in Human Services Education.

Choose from one of the following concentrations:

- Family and Community Services
- Organizational and Social Services

# WHY STUDY HUMAN SERVICES AT PURDUE UNIVERSITY GLOBAL?

## ONLINE FLEXIBILITY FOR WORKING ADULTS

Complete your coursework 100% online, while meeting the demands of your career. You can also visit one of our regional locations to take advantage of local, onsite support and services. The program includes an optional online or onsite internship.

## FACULTY EXPERTISE

Learn from professors with extensive experience in the human services field. All professors possess a doctorate degree and relevant industry credentials.

## PRACTICAL EXPERIENCE

Put your learning to work with a hands-on capstone project that challenges you to tackle a real-world human services concern through a needs assessment and follow-up analysis. You can also gain practical, professional experience in the field through the optional internship.

## ONE-ON-ONE MENTORING

Work directly with faculty via a live weekly video seminar, online discussion boards, and faculty office hours. You will also have access to the Graduate Resource Center, quarterly concentration-specific student webinars, and no-cost tutoring. Academic and career advisors are dedicated to helping you balance school with your career and life responsibilities.

## NATIONALLY RANKED AND RESPECTED

Purdue Global is part of the respected Purdue University system. One of the most prestigious research universities in the world, Purdue University is ranked in the top 10 best public universities in the U.S. by *The Wall Street Journal/Times Higher Education*.<sup>2</sup>



"Our program is designed to prepare students for positions in leadership and management in not-for-profit organizations. Students who strive to be leaders in the field of child and family services, as well as social services and private agencies, will appreciate the coursework and the opportunities this degree will afford them."

### Julie Riley

PhD, LCSW, MEd, HSBCP

Human Services Program Chair<sup>3</sup>

# BECOME A LEADER WHO IS A TRUE PROPONENT OF CHANGE

The program is designed for professionals who are committed to improving the quality of life for all people in the growing field of human services. Prepare to advance your current career in human services or to take on an administrative role in fundraising, grant writing, or program management. Develop the skills that employers—and clients—can depend on:

- Use critical thinking to devise innovative, strategic, empathetic solutions to complex situations.
- Demonstrate knowledge of the theoretical bases, best practices, and historical and current trends related to the human services profession.
- Identify, plan, and utilize resources to improve client situations.
- Understand proper professional, ethical, and legal workplace expectations.
- Utilize information and systems to appropriately manage and deliver human services.
- Recognize the importance of culture, gender, diversity, and global perspectives when working with clients.
- Work with diverse funding sources, influence policy, and intervene on behalf of those in need.
- Understand funding avenues and grant processes that are beneficial to starting a not-for-profit agency.

## CURRICULUM

Our comprehensive curriculum focuses on the delivery of services; the accessibility, design, implementation, and evaluation of interventions; and the planning, administration, and coordination of programs. Courses are reviewed and revised continually by industry experts to ensure they reflect the most recent developments in the field.

### CORE COURSES

- History, Multiculturalism, and Diversity in Human Services
- Skills and Practice in Human Services
- Professional Ethics and Personal Values

### CONCENTRATIONS

Gain specialized expertise with a career-focused concentration. Choose from:

#### Family and Community Services

Learn to address the complexities of developing and administering services for children and families. The concentration includes an emphasis on program development, resiliency, family theories, and advocacy.

#### Organizational and Social Services

Gain the knowledge and skills to work with diverse funding sources, influence policy, supervise staff, and develop and administer programs or interventions that address community needs.

### PROGRAM DETAIL

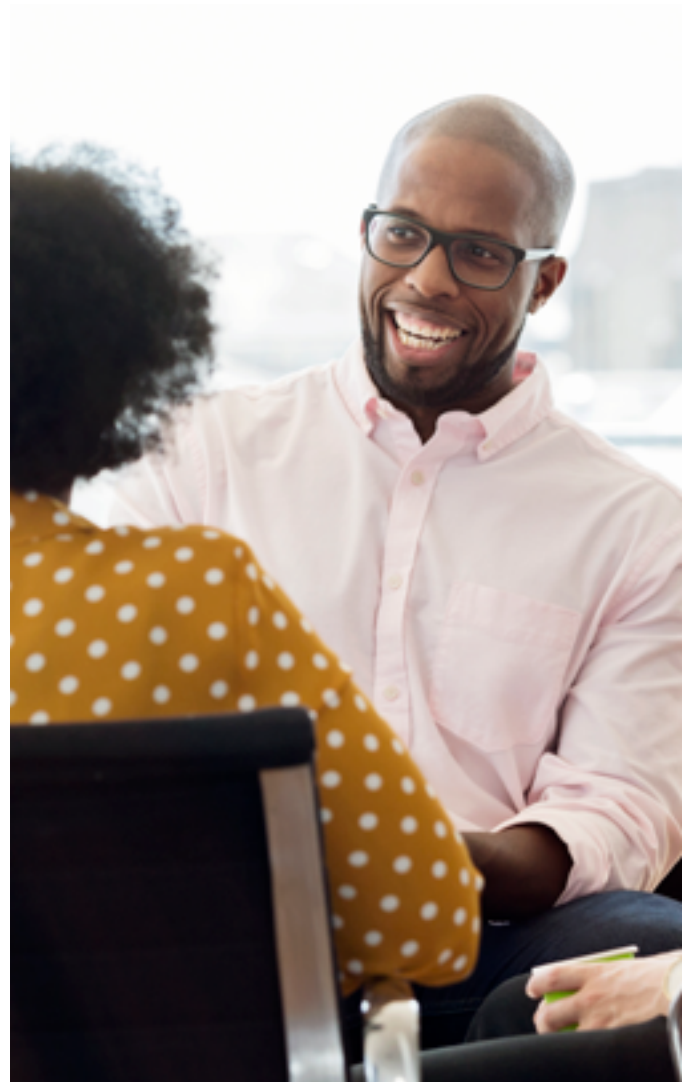
**Credit Hours:** 45

**Program Length:** 1 year of full-time study

**Course Load:** 1–2 per term

**Terms:** 10 weeks long

**Start Dates:** Throughout the year



# CAREER AND NETWORKING OPPORTUNITIES

## INDUSTRY OUTLOOK

- Employment of social and community service managers is expected to grow much faster than average from 2016 to 2026.<sup>4</sup>
- As America's "in-need" population increases, there is an expected demand for professionals who are committed to improving quality of life using evidence-based research and ensuring these individuals receive support and care.

## CAREER PATHWAYS AND OUTCOMES<sup>1</sup>

### Roles

- Social or community service worker or manager
- Agency caseworker or manager
- Development director
- Program worker or manager
- Executive director
- Nonprofit worker or manager

### Settings

- Nonprofit agency
- Government office
- Private agency
- Hospital
- Nursing home
- School

## CAREER SERVICES

Our team of Career Specialists helps connect students with job and networking opportunities, and offers the following assistance:

- Career assessment/exploration
- Resume and cover letter review
- Interview preparation/mock interviews
- Portfolio development to showcase your skills
- Assistance in building an online presence
- Job search and networking support
- Virtual career fairs
- 24/7 online access to job openings and career development tools

## STUDENT ORGANIZATIONS AND HONOR SOCIETIES

- Human Services Club
- Tau Upsilon Alpha Honor Society



## ADDITIONAL PROGRAMS

- Master of Public Administration
- Master of Science in Psychology

## Accredited by The Higher Learning Commission

This accreditation covers all academic programs, all regional locations, and all programs provided via distance education. Contact the HLC at [HLCcommission.org](http://HLCcommission.org) or call 800-621-7440.

## Military Friendly

We offer reduced tuition rates for servicemembers, veterans, and spouses.



This accolade was awarded prior to the March 2018 purchase of Kaplan University by Purdue University and subsequent creation of Purdue University Global. Purdue Global cannot guarantee future accolades.

Contact an Admissions Advisor at **844-PURDUE-G** or visit **[www.PurdueGlobal.edu](http://www.PurdueGlobal.edu)**.

### IMPORTANT INFORMATION: PLEASE READ

For comprehensive consumer and gainful employment information, visit [Info.PurdueGlobal.edu](http://Info.PurdueGlobal.edu).

<sup>1</sup> Purdue Global cannot guarantee employment or career advancement. Prior experience may be necessary for leadership positions. This program was not designed to lead to certification or licensure as a social worker or counselor in any specific state, and Purdue Global makes no representations or warranties as to whether the degree or any individual courses meet such requirements. Refer to the University Catalog for additional information.

<sup>2</sup> Source: [www.timeshighereducation.com/student/best-universities/best-public-universities-united-states](http://www.timeshighereducation.com/student/best-universities/best-public-universities-united-states). Rankings apply to Purdue University West Lafayette and not to Purdue Global.

<sup>3</sup> This testimonial was obtained by Purdue University Global. The views and opinions expressed are those of the individual; student experiences may vary.

<sup>4</sup> Source: U.S. Department of Labor, Bureau of Labor Statistics, *Occupational Outlook Handbook*, Social and Community Service Managers. National long-term projections may not reflect local and/or short-term economic or job conditions, and do not guarantee actual job growth.