



MASTER OF

HEALTH CARE ADMINISTRATION

PREPARE TO TAKE ON LEADERSHIP POSITIONS IN HEALTH CARE

With America's health care system constantly evolving, management of this shifting landscape requires professionals with special knowledge, keen insight, and innovative problem-solving skills. Purdue University Global's Master of Health Care Administration (MHCA) equips you with the expertise to oversee and manage the delivery of health care services within the medical field and related sectors. Gain the administrative, ethical, and professional acumen to become a leader in this dynamic and fast-growing field.

Why Study at Purdue Global's School of Health Sciences?

FLEXIBILITY FOR WORKING ADULTS

Complete your degree 100% online, while meeting the demands of your career.

FACULTY EXPERTISE

Learn from experienced health care professionals currently active in the field. Nearly all of our faculty possess advanced academic degrees.

RELEVANT, RIGOROUS CURRICULUM

Prepare to handle complex new developments in technology, economics, ethics, finance, policy, and management.

PRACTICAL LEARNING

Apply your learning to a real-world issue in health care management through a final capstone project.

ONE-ON-ONE MENTORING

Work directly with faculty through online discussion boards and seminars, and enjoy no-cost individual tutoring. In addition, academic and career advisors are dedicated to helping you balance school with your career and life responsibilities.

NATIONALLY RANKED AND RESPECTED

Purdue Global is part of the respected Purdue University system. One of the most prestigious research universities in the world, Purdue University is ranked in the top 10 best public universities in the U.S. by *The Wall Street Journal/ Times Higher Education*.¹



“*I highly enjoyed my classes and my professors as they made learning fun, insightful, and relevant to the ever-changing health care field. One of my professors, in particular, went above and beyond to teach the subject of the week in an engaging and easy-to-learn way. My goal is to be able to mirror his teachings and apply what I learned at the company that I work for. I'm honored to attend Purdue Global and recommend the University to anyone looking for a challenging online program that is flexible and provides hands-on learning, all in the spirit of growing and learning together.*”

Erica Fuller

Master of Health Care Administration Student²

Curriculum

Our comprehensive curriculum emphasizes advanced knowledge and skills as well as overall concepts, values, research methods, and applications relevant to health care administration. Courses are reviewed and revised regularly by industry experts to ensure they reflect the most recent developments in the field.

COURSES

- Organizational Development for Health Care
- Leadership and Management in Health Care
- Health Care Financial Management
- Health Care Law and Ethics
- Human Resources for Health Care Managers
- Health Care Statistics
- Health Care Operations and Quality Assessment
- Health Policy
- Health Information Applications and Systems
- Health Care Marketing
- Master's Capstone in Health Care Administration

PROGRAM OUTCOMES

- Demonstrate effective health care leadership through proficient communication, interpersonal, and teamwork skills.
- Design solutions through proficient critical thinking, analytical, and problem-solving skills.
- Assess the impact of health care system(s) and environment on organizational goals.
- Apply leadership, management, and organizational principles and practices to further organizational goals.
- Design goals by applying personal and professional development principles and practices.

PROGRAM DETAIL

Credit Hours: 52 (13 courses)

Program Length: 18 months of full-time study

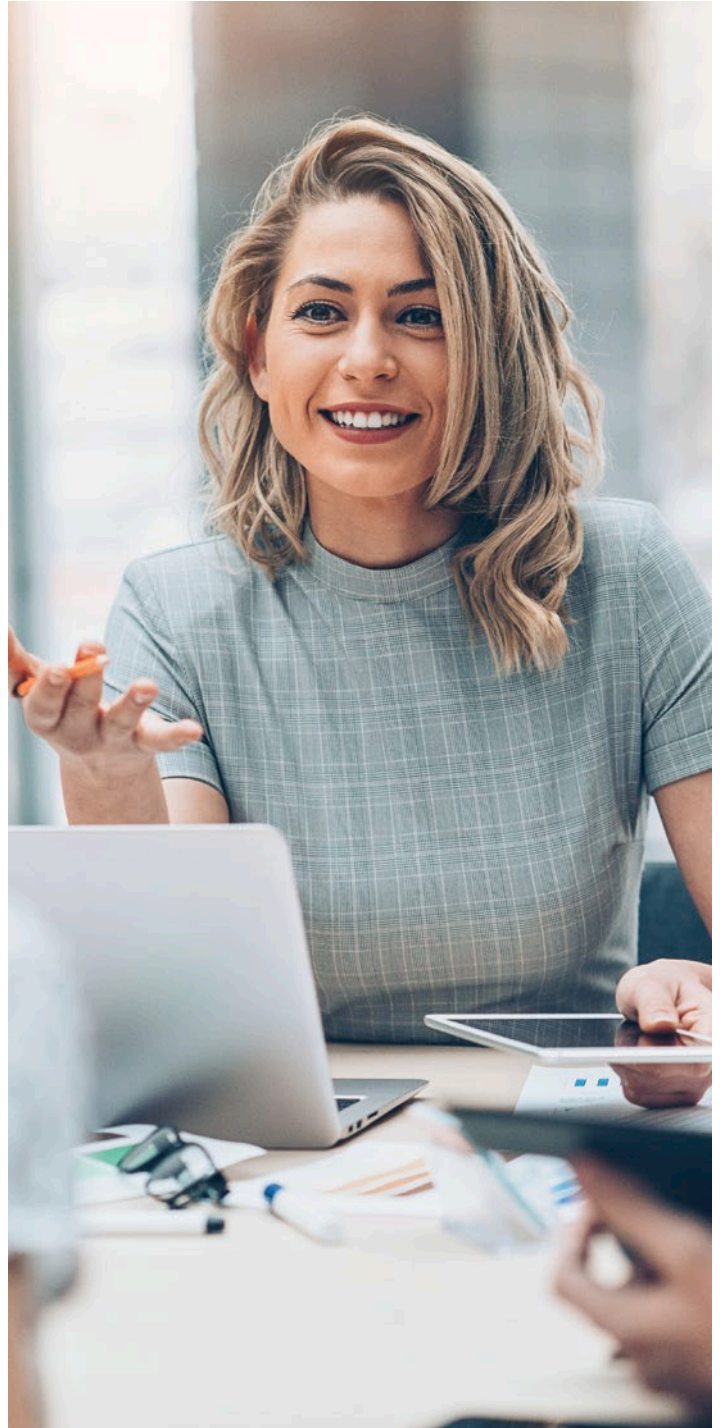
Course Load: 2 courses per term

Terms: 10 weeks long

Start Dates: Throughout the year

Delivery: 100% online

The Master of Health Care Administration program at Purdue Global has achieved candidacy status from the Commission on Accreditation of Healthcare Management Education (CAHME). The achievement of candidacy status demonstrates that the School of Health Sciences is committed to meeting the rigorous standards established by CAHME and continuous quality improvement as part of the accreditation process.



Career and Networking Opportunities

INDUSTRY OUTLOOK

- According to the Bureau of Labor Statistics, employment of **medical and health services managers** is projected to grow 28% from 2021 to 2031, much faster than the average for all occupations.³
- Health care occupations are projected to add more jobs than any other occupational groups, **with 2 million new jobs** expected by 2031. This growth will be fueled mainly by growth and replacement needs.⁴

CAREER PATHWAYS AND OUTCOMES⁵

Roles

- Medical and health services manager
- Medical office manager
- Intake coordinator
- Patient coordinator
- Contract administrator
- Payroll coordinator
- Program manager
- Administrator—medical
- Department manager—medical
- Department or division manager/supervisor
- Government relations director
- Health care consultant

Settings

- Hospitals
- Clinics
- Private offices
- Outpatient care facilities
- Home health care agencies
- Insurance agencies
- Pharmaceutical companies
- Social welfare programs

CENTER FOR CAREER ADVANCEMENT

Our team of Career Specialists helps connect students with job and networking opportunities and offers the following assistance:

- Career assessment/exploration
- Resume and cover letter review
- Interview preparation/mock interviews
- Portfolio development to showcase your skills
- Assistance in building an online presence
- Job search and networking support
- Virtual career fairs
- 24/7 online access to job openings and career development tools

ADDITIONAL PROGRAMS

- Master of Health Care Administration
- Master of Health Informatics
- Master of Health Information Management
- Master of Public Health
- Master of Science in Health Education and Promotion
- Doctor of Health Science

Accredited by the Higher Learning Commission

Purdue Global is accredited by the Higher Learning Commission (HLC). The HLC (HLCommission.org) is an institutional accreditation agency recognized by the U.S. Department of Education.

Military Friendly

We offer reduced tuition rates for servicemembers, veterans, and spouses.

Contact an Admissions Advisor at **844-PURDUE-G** or visit **PurdueGlobal.edu**.

IMPORTANT INFORMATION: PLEASE READ

For comprehensive consumer information, visit Info.PurdueGlobal.edu.

See the University Catalog for the Prior Learning Assessment policy.

1 Source: www.timeshighereducation.com/student/best-universities/best-public-universities-united-states. Rankings apply to Purdue University West Lafayette and not to Purdue Global.

2 This testimonial was obtained by Purdue University Global. The views and opinions expressed are those of the individual; student experiences may vary.

3 Source: U.S. Department of Labor, Bureau of Labor Statistics, *Occupational Outlook Handbook*, Medical and Health Services Managers. National long-term projections may not reflect local and/or short-term economic or job conditions, and do not guarantee actual job growth.

4 Source: U.S. Department of Labor, Bureau of Labor Statistics, *Occupational Outlook Handbook*, Healthcare Occupations.

5 Purdue Global does not guarantee employment or career advancement. Actual outcomes vary by geographic area, previous work experience and opportunities for employment. Additional training or certification may be required. Prior experience may be necessary for leadership positions. In addition, job titles and responsibilities may vary from organization to organization.